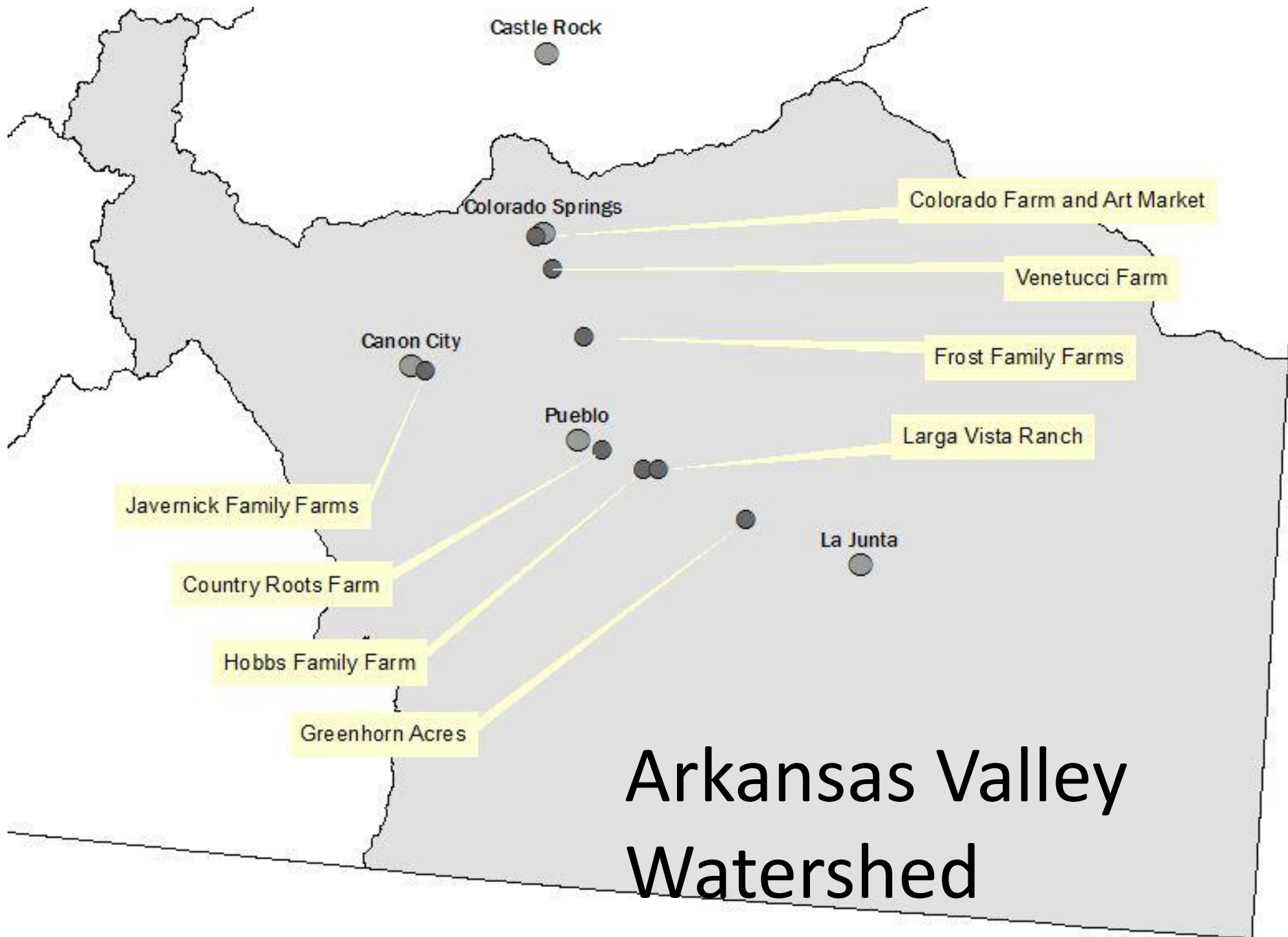
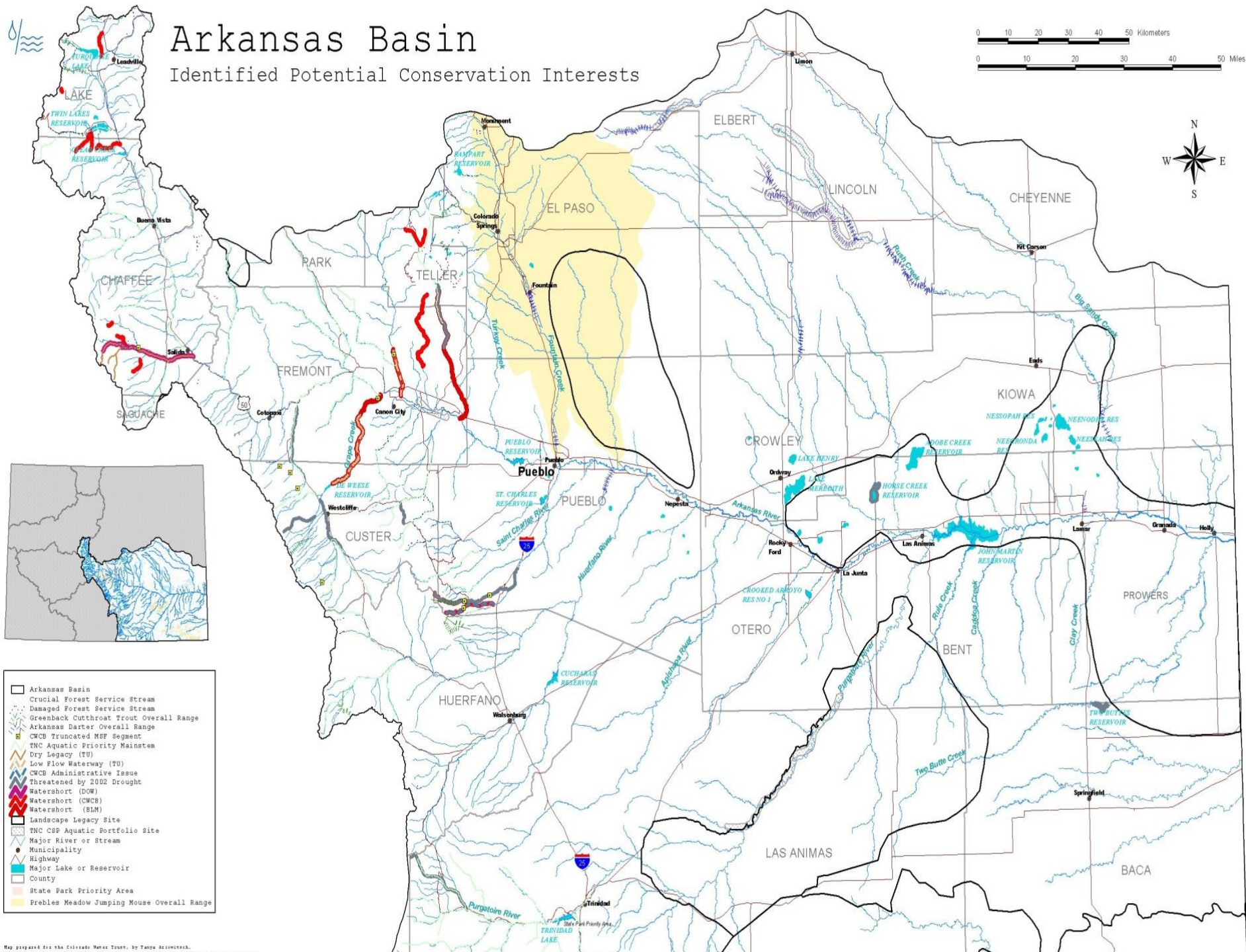


A map of the Arkansas Valley region, showing various watersheds and foodsheds. The map is color-coded: red for the Arkansas River watershed, yellow for the Gunnison-Dolores Rivers watershed, and green for the San Juan River Basin. Other watersheds shown include North Platte-White-Yampa River, Upper South Platte River, Lower South Platte River, Upper Arkansas River, Lower Arkansas River, and Rio Grande River. The map also shows county boundaries and names, such as Routt, Garfield, and Grand. The text "The Arkansas Valley: Our Watershed and Our Foodshed" is overlaid in large yellow letters.

The Arkansas Valley: Our Watershed and Our Foodshed

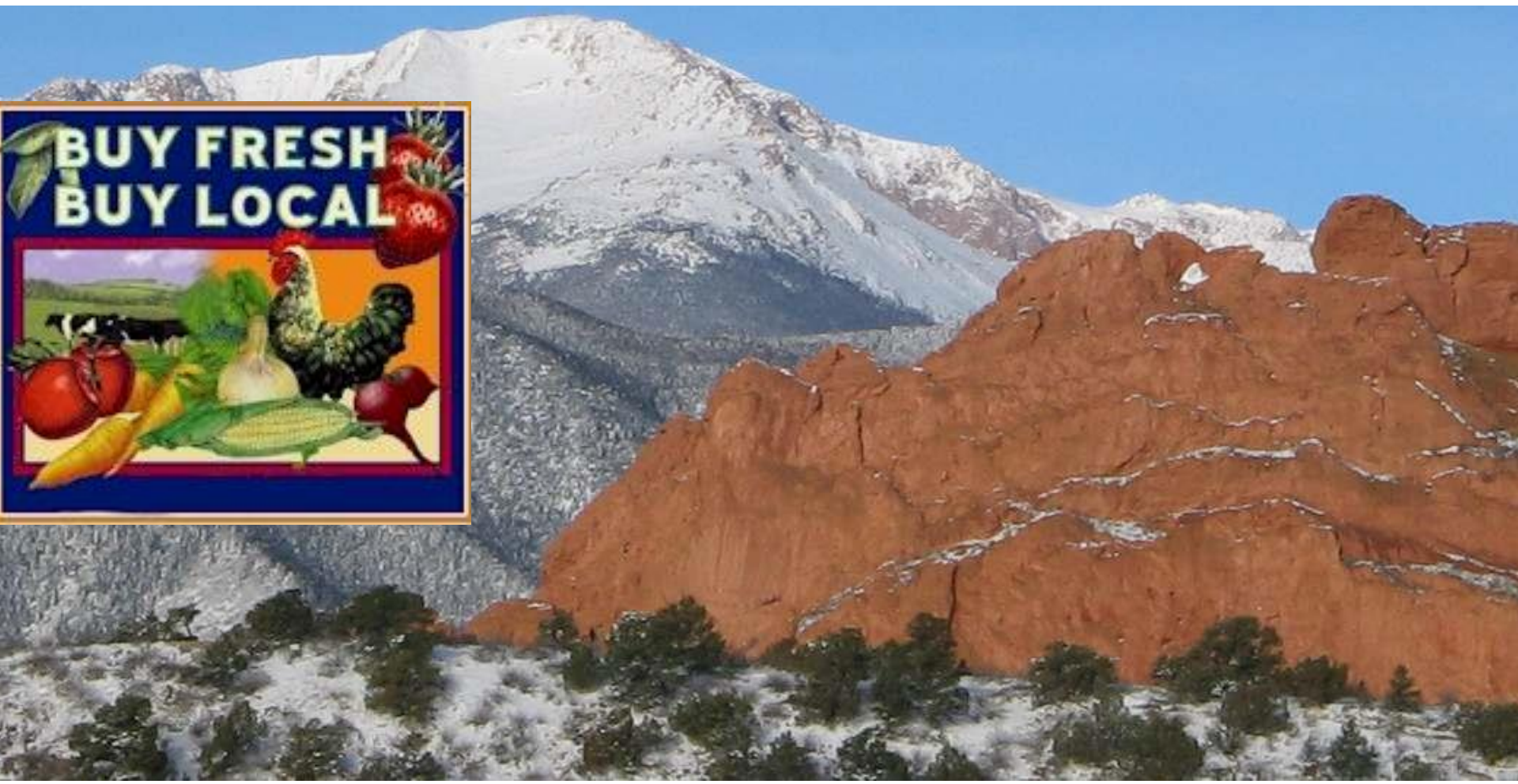


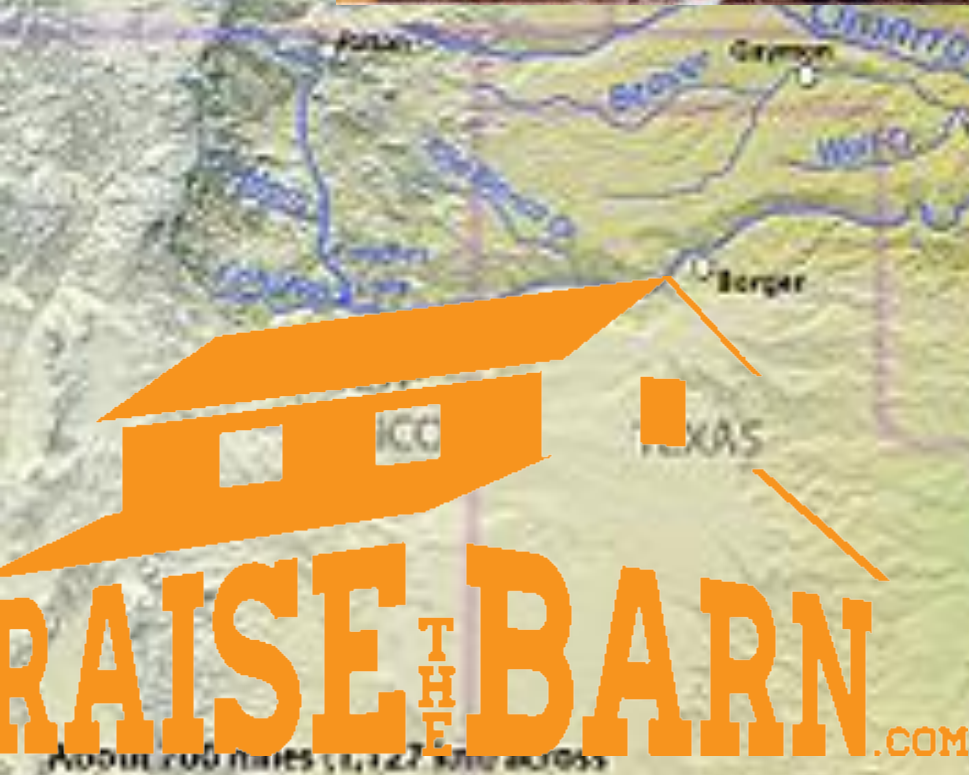


Local Food

There is no single definition of "'local' or 'local food systems' in terms of the geographic distance between production and consumption. The concept of "local" is important in terms of ecology, where food production is considered from the perspective of a basic ecological unit defined by its climate, soil, watershed, species and local agriystems, a unit also called an ecoregion or a foodshed. The concept of the foodshed is similar to that of a watershed; it is an area where food is grown and eaten.

LOCAL FOOD. Food that is grown in one's local watershed.







HUNT OR GATHER

LOCAL FOOD MARKETPLACE
A PROGRAM OF THE Pikes Peak Community Foundation







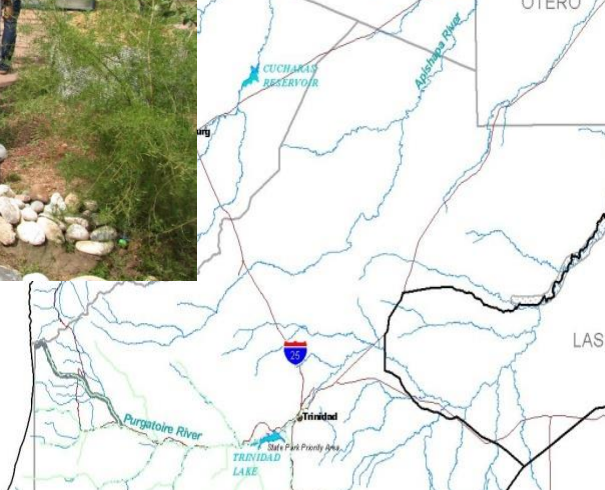
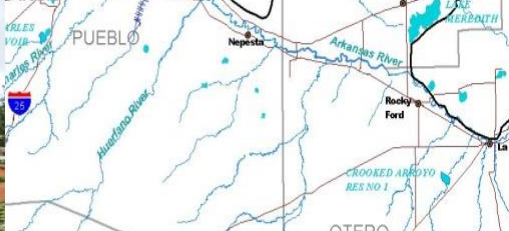
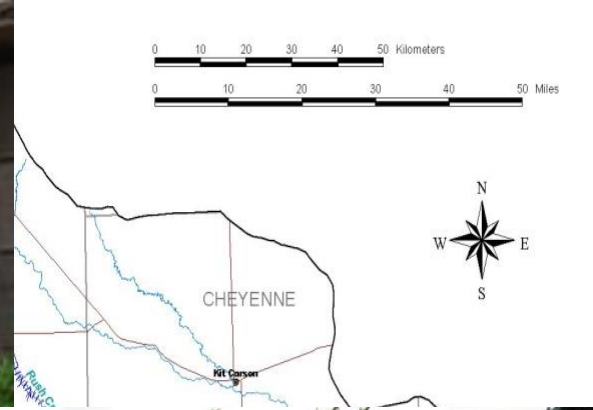
Family Roots Farm (Javernick Family Farms)





Arkansas Basin

Identified Potential Conservation



- Landscape Legacy Site
- TNC CSP Aquatic Portfolio Site
- Major River or Stream
- Municipality
- Highway
- Major Lake or Reservoir
- County
- State Park Priority Area
- Pebbles Meadow Jumping Mouse Overall Range



sin
Conservation

